

# Toxic Chemicals in Toys and their health effects

Expert Dialogue,  
European Parliament Brussels,  
3rd of September 2008

**Lunch Event**  
**Room ASP 1G3 from 13:00 –15:00**

## Speakers:

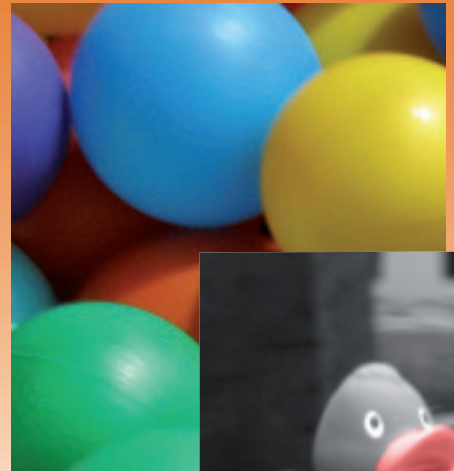
- **Welcome speech by Jens Holm,**  
**Member of the European Parliament, GUE/NGL group**
- **M. Sc. Henrik Leffers,**  
**Head Department for Groth and Reproduction,**  
**Copenhagen University Hospital, Denmark**
- **Dr. Klaus Brüggemann, Verband der TÜV, Germany**
- **Eva Eiderstrom, Director of Shop and Act Green,**  
**Swedish Society for Nature Conservation, Sweden**

## Dear members of IMCO and ENVI

We would like to invite you to our Expert Dialogue concerning the new Toys Safety Directive. As members of the IMCO and ENVI committees we understand that you have an interest in shaping this new directive.

Our lunch event aims to inform you as Members of the European Parliament about hazardous chemicals in toys and their health effects on children and to discuss possible amendments to the proposed directive.

Your participation will be highly appreciated.



**WECF** | Women in Europe for a Common Future

**Please contact** Alexandra Caterbow, WECF, [alexandra.caterbow@wecf.eu](mailto:alexandra.caterbow@wecf.eu)

WECF Germany  
Sankt Jakobs Platz 10, 80331 Munich  
Phone: +49-89-2323938-0  
Fax: +40-89-2323938-11

WECF The Netherlands  
PO Box 13047, 3507 LA, Utrecht  
Phone: +31-30-23 10 300  
Fax: +31-30-23 40 878

WECF France  
BP 100, 74103 Annemasse Cedex  
Phone: +33-4-50490738  
Fax: +33-4-50499738

WECF Women in Europe for a Common Future is a network of 100 women and environment organisations. WECF works for a healthy environment for all, and supports the Johannesburg WSSD target of eliminating hazardous chemicals in consumer products.