

# **IPEN-UNEP Partnership Women and Chemicals**

**IPEN Gender Initiative  
IPEN Gender Caucus**

**Olga Speranskaya  
IPEN Co-Chair**

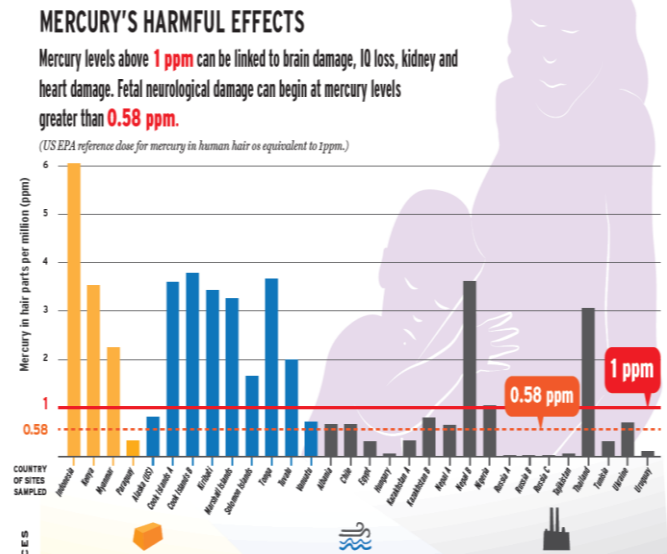
# Why focus on women and chemicals?

- Elevate gender aspects of chemical safety
- Lack of data
- No gender aspects in environmental assessment
- Differences in gender susceptibility to chemical exposure are not considered
- Low project effectiveness

# Impacts of chemicals to women and children



WHO exposure of pregnant women to lead, including lead in paint, can cause serious lifelong damage, such as miscarriage, stillbirth as well as malformations



# Toxic chemicals and occupational exposure: feminization of poverty

How ASGM  
affects women?



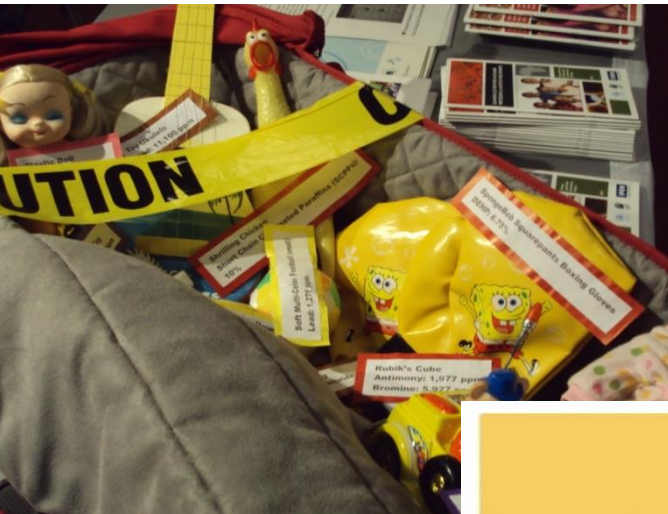
# Equality in Decision Making

This feminization of poverty makes women more vulnerable to toxic chemical exposure, putting their health at risk.





# Raising awareness on women and chemicals issues in the international Chemicals and Health policy processes



## CITIZENS' REPORT

IMPLEMENTATION OF THE STRATEGIC APPROACH TO INTERNATIONAL CHEMICALS MANAGEMENT (SAICM) BY IPEN PARTICIPATING ORGANIZATIONS 2009-2012



September 2012  
Prepared by IPEN



## AN NGO GUIDE TO SAICM THE STRATEGIC APPROACH TO INTERNATIONAL CHEMICALS MANAGEMENT



## A Framework for Action To Protect Human Health and the Environment From Toxic Chemicals

By Jack Weinberg  
Senior Policy Advisor, IPEN

Updated December 2014  
Initial release June 2008



## INTRODUCTION TO ENDOCRINE DISRUPTING CHEMICALS (EDCs)

A GUIDE FOR PUBLIC INTEREST ORGANIZATIONS  
AND POLICY-MAKERS



Andrea C. Gore, PhD  
David Cress, PhD  
Loretta L. Doan, PhD  
Nicholas L. Merrill, PhD, MPH  
Heather Pettissal, PhD  
Ami Zela, ScD, MS

December 2014



## TOXIC METALS IN CHILDREN'S PRODUCTS: AN INSIGHT INTO THE MARKET IN EASTERN EUROPE, CAUCASUS AND CENTRAL ASIA



Partnership between GRID-Arendal and IPEN

