

Are you prepared?

1

GLOBALIZATION, INDIVIDUALIZATION,, GREEN
GROWTH, WEB 2.0., GREEN IT, **NATIONALLY**
APPROPRIATE **MITIGATION** **ACTION**,
MOBILITY, VIRTUALIZATION, **ENVIRONMENT**
SUSTAINABILITY, AGING, OPEN SOURCE, MASS
COLLABORATION

Nationally Appropriate Mitigation Action

2



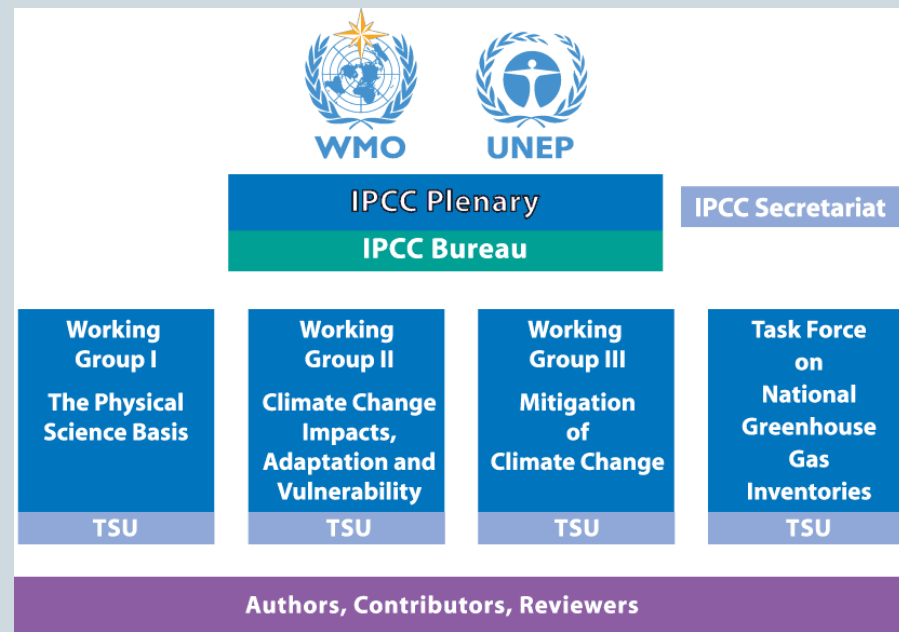
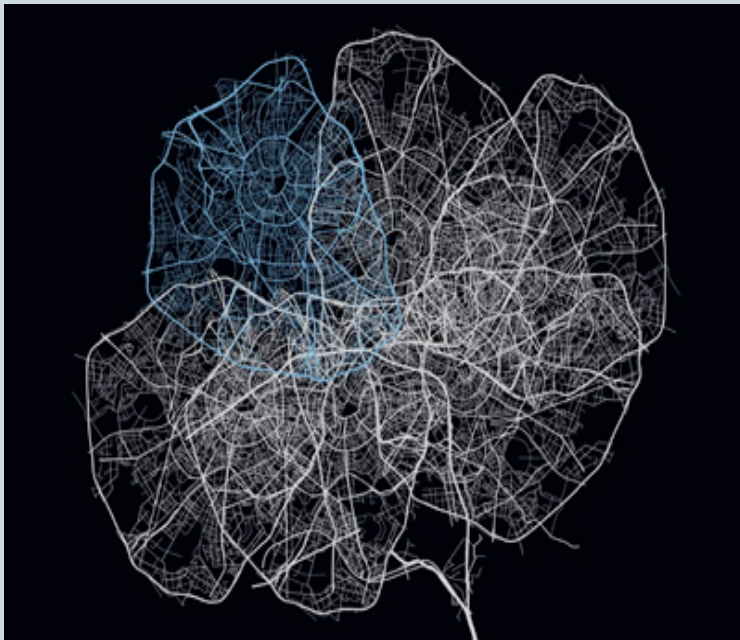
overcomplexicity

3



addressing a complex issue through a linear process....?

4



Let's keep NAMAs simple

5



the context of NAMAS: the global commons

6

- Developing countries are in **different** stages concerning economic development, energy supply and mitigation potential
- They have a **common** level of vulnerability to climate change
- They have a **common** wish to enhance regional cooperation in mitigating climate change and in adaptation.

What are NAMAs?

7

- **Nationally Appropriate Mitigation Action (NAMA)** refers to a set of policies and actions countries undertake as part of a commitment to reduce greenhouse gas emissions.
- **Different countries may take different nationally appropriate action** on the basis of equity and in accordance with common but differentiated responsibilities and respective capabilities.
- It also emphasizes **financial assistance** from developed countries to developing countries to reduce emissions.

History of NAMAs

8

Bali

- Measurable, reportable and verifiable nationally appropriate mitigation commitments or actions by all developed countries, and;
- Nationally appropriate mitigation actions by developing country Parties, supported and enabled by technology, financing and capacity-building, in a measurable, reportable and verifiable manner

MEC

- Our countries will undertake transparent nationally appropriate mitigation actions, subject to applicable measurement, reporting, and verification, and prepare low-carbon growth plans.

COP 15

- Non-Annex I Parties will communicate information on the implementation of their actions through National Communications,
- **Nationally appropriate mitigation actions** seeking international support will be recorded in a registry along with relevant technology, finance and capacity building support.
- **Nationally appropriate mitigation actions** will be subject to international measurement, reporting and verification in accordance with guidelines adopted by the Conference of the Parties.

NAMAs light.....

9

- **What is meant by Nationally Appropriate Mitigation Action?**
- Different countries, different nationally appropriate action on the basis of equity and in accordance with common but differentiated responsibilities and respective capabilities
- Developing countries will effectively implement national action depending on the effective implementation of the commitments by developed countries in provision of financial resources and transfer of technology.
- The priorities of developing countries are **economic and social development and poverty eradication**

Guiding principles of NAMAs

10

- **Urgency:** The number one priority is fighting climate change
- **Equity:** Although action is priority, there will be no agreement and no thus no action, if it is not based on fairness and equity
- **Science:** “we can’t change the science, so we have to change the politics”.
- **Leadership:** Annex I countries must lead
- **Precautionary principle**
- **Early action** by NA1 is in the interest of NA1 countries

How does a NAMA look like?

11

Guiding principle: Sectoral approach as a domestic action

- Energy Sector
- Industrial Sector
- Urban Sector
- Mobility Sector
- Forestry Sector
- etc

- Ensure environmental sustainability but at the same time **pro-growth, pro-poor, pro-employment**

- **National policy related to CC**, integrated with other development aspects

- Establish **economic incentives** that supports mitigation action, including fiscal, financial, market instruments

Why NAMAS should be measurable, reportable and verifiable (MRV)

12

- Developed countries must commit to delivering finance and technology to developing countries covering the agreed costs of their **measurable, reportable and verifiable** (MRV) nationally appropriate mitigation actions (NAMAs).
- These developed country commitments must be quantified, measurable, reportable and verifiable

The UNFCCC registry

13

- UNFCCC Registry to formalise the link between enhanced action and support
- UNFCCC registry should be established to make sure that NA1 NAMAs are coherent with the countries responsibility, capability and potential.
- A binding “contract” has to be made outlining the quantified deviation to achieve between developed and developing countries through matching additional MRV action for MRV support.

CAREC and the NAMAs

14

Within the framework of the International Climate Change initiative of the German Ministry of Environment, CAREC :

- Will hold two **training workshops** on how to prepare a NAMA for participants from Central Asia in Tashkent (October 2010) and Almaty (February 2011)
- With support of GTZ will assist and support countries of Central Asia in formulation of their NAMAs



EINE WELT. EINE KLIMASCHUTZINITIATIVE.

Die Internationale Klimaschutzinitiative (IKI) finanziert seit 2008 Klimaschutzprojekte in Entwicklungs- und Schwellenländern sowie in den Transformationsstaaten Mittel- und Osteuropas. Die IKI finanziert sich aus den Emissionshandelserlösen und stellt somit einen innovativen Finanzierungsmechanismus dar, mit dem die Partnerländer im Bereich Klimaschutz unterstützt werden. Mit dieser neuen Form der Zusammenarbeit ergänzt das Bundesumweltministerium die bestehende Entwicklungszusammenarbeit der Bundesregierung.